

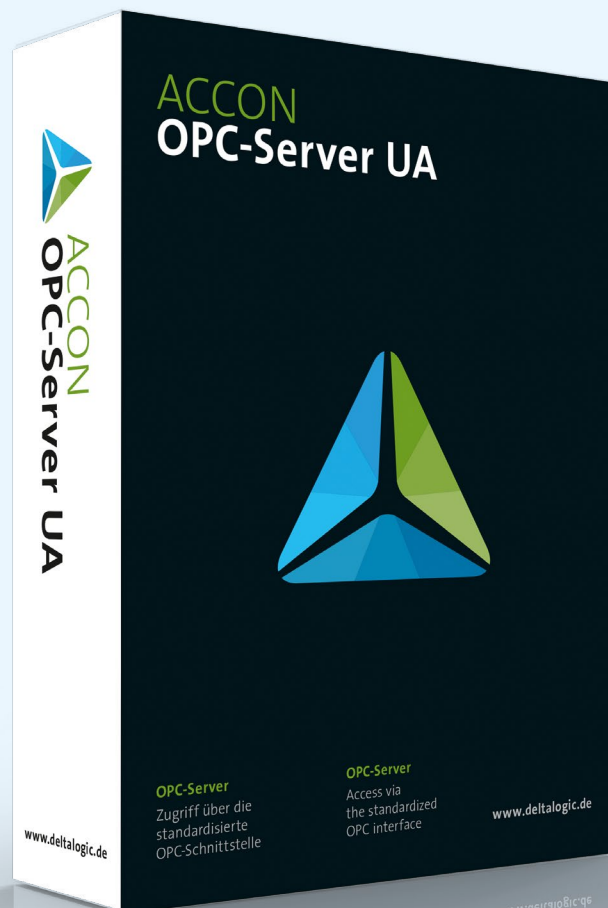


DELTA LOGIC
A RAINER HÖNLE COMPANY

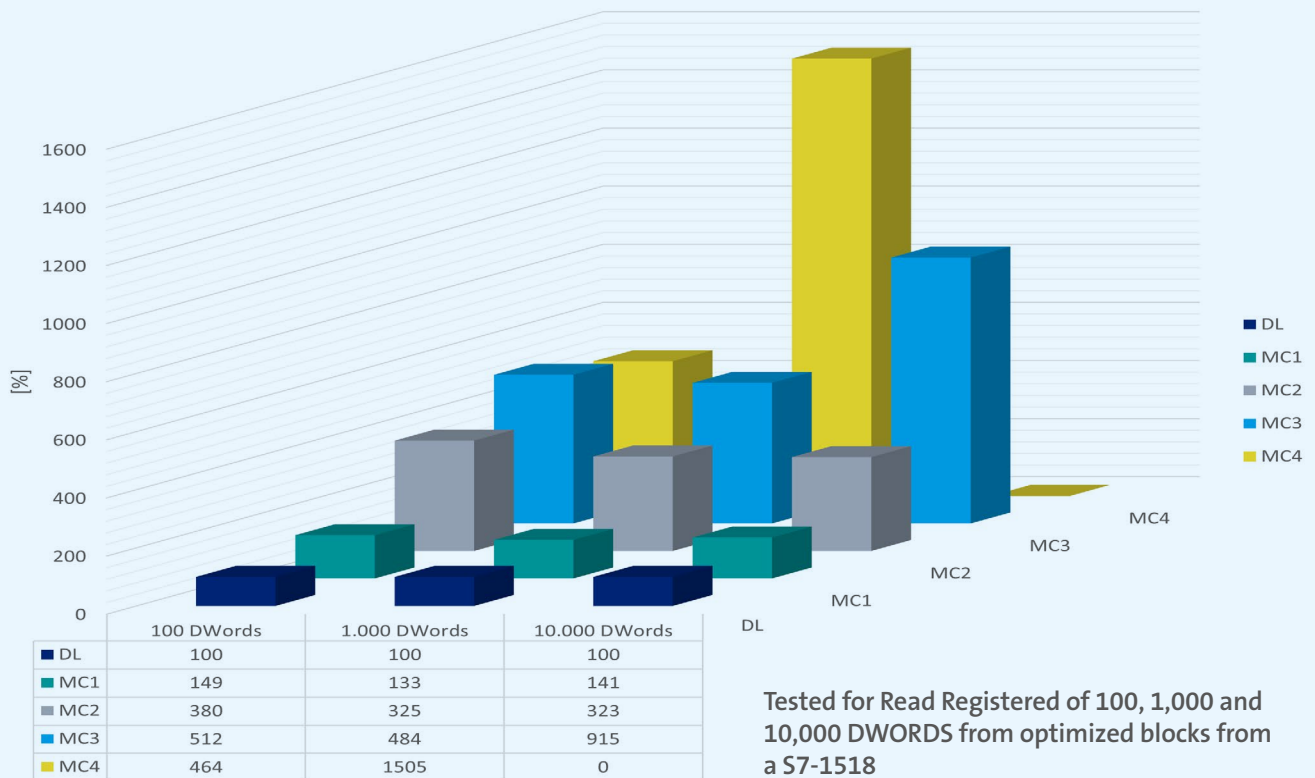
More than just PC PLC communication. Simple. Different.



The probably most performant **OPC Server UA** on the market



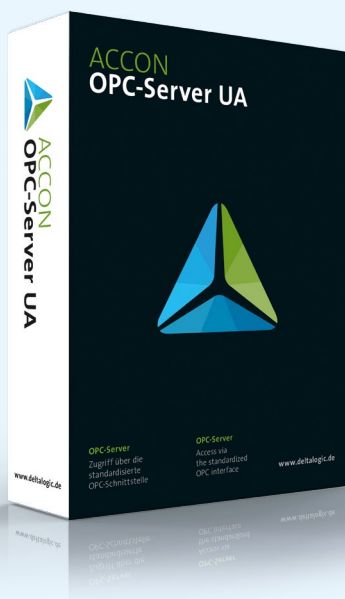
Comparison OPC Server UA performance during optimized reading



Tested for Read Registered of 100, 1,000 and 10,000 DWORDS from optimized blocks from a S7-1518

MC = Market Companion

ACCON-OPC-Server UA



Product Highlights

- Access to optimized data blocks
- Online symbol import from S7-1200 and S7-1500 controllers
- Multi-project capable: variables from several projects can be used in the same address space
- Intuitive and clear user interface
- Use of up to 255 PLCs
- Support of all UA security levels
- Easy installation and thus fast operational readiness



The number of certified OPC-Server UA for optimized data blocks can be counted on three fingers.

Supported controllers

S7-1200/1500



S7-1200



S7-1500

- Support of optimized data blocks (TIA Portal)
- Online symbol import from S7-1200 and S7-1500 controllers (also with password protection)
- Import of symbols from Siemens TIA Portal projects
- With Registered Read more than three times faster than the integrated OPC server of the S7-1518

PLC photos: (C) Siemens AG 2022. All rights reserved

S7-300/400



S7-300

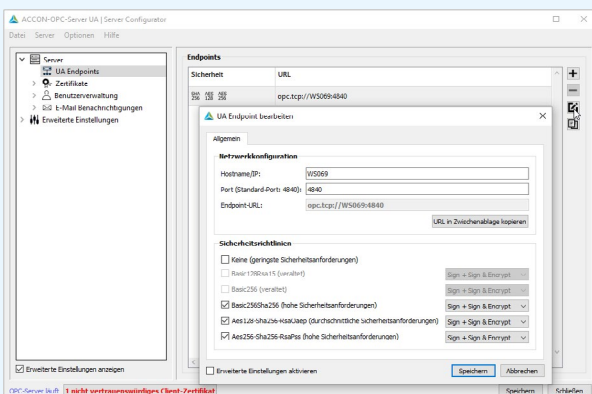


S7-400

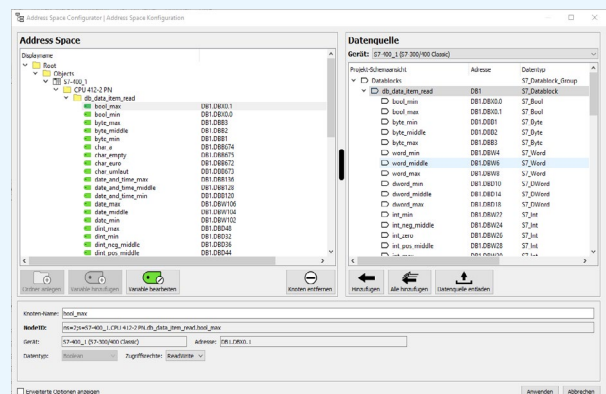
- Import of symbols from Siemens TIA Portal projects
- Symbol import from Step7 classic projects
- Variable import from DELTA LOGIC S7/S5-OPC-Server via alias file
- Upgrade from OPC DA manually possible

PLC photos: (C) Siemens AG 2022. All rights reserved

Configuration



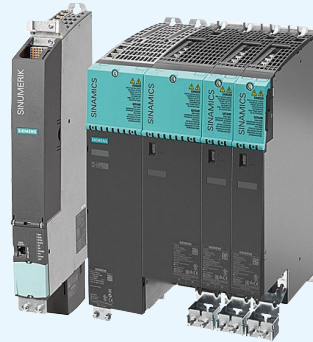
Server Configurator



Adress Space Configurator



SINUMERIK 840D



- Access to SINUMERIK 840D sl, 840D pl and 810D pl
- Access to all variables of the list manuals via comfortable selection
- Direct online import of all GUD variables

PLC photos: (C) Siemens AG 2022. All rights reserved

Benefits

- Address SINUMERIK controlled machines via OPC UA
- Determine utilization and availability of CNC machines
- Monitor and record machine data such as operating mode, torques, power consumption, axis positions
- Display of the running NC program, number of generated parts and access level
- Access to tool data: Magazine, tool compensation data, tool monitoring data
- Data source for monitoring (dashboard) of the machine, e.g. machine status, program status, cycle time, number of pieces, operating hours, OEE

SINUMERIK users benefit from further highlights:

- Access to over 4,000 NC variables
- Access to user data (GUD)
- Comfortable browsing of variables and GUDs
- Access to SINUMERIK PLC data