



S7/S5-OPC-Server

Fast and comfortable data access

The S7/S5 OPC server provides the process data of Siemens PLCs via the standardized OPC interface. Thus every standard conform OPC client can read and also write values from such a PLC.

Perfect fields of application

The S7/S5-OPC-Server is ideal for a fast and comfortable data connection between PC and controllers. It masters the communication to the current PLC families of the series S7-200, S7-1200, S7-300, S7-400, S7-1500 and LOGO! 0BA7/0BA8, as well as to the still widely used S5 PLCs. S7-300/400 compatible PLCs are also supported. For communication with the PLC a variety of communication paths are possible (see *Technical details*).

Convincing and multifaceted

The S7/S5-OPC-Server allows e.g. the coupling of a process visualization to Siemens PLCs. Besides OPC DA the S7/S5-OPC-Server also supports OPC XML-DA. Thus also non-Windows based applications can use the S7/S5-OPC-Server. For the data exchange neither a configured connection nor a modification of the PLC program is necessary.

Besides, the S7/S5-OPC-Server has an integrated web server that is used to diagnose the OPC server. Thus lean web-based visualizations can be realized.

Additionally, the S7/S5-OPC-Server supports the use of symbolic names from S7 projects. With the possibility to import these names, even without the need to have the S7 project available at runtime.

You have the choice

The software S7/S5-OPC-Server can be supplied as a single licence with USB dongle or with software authorisation system. We recommend to use the licence with USB dongle if technically possible.

Technical Highlights

- Supports S7-200, S7-1200, S7-300, S7-400, S7-1500 and S5 PLCs as well as LOGO! 0BA7/0BA8
- Communication via MPI, PROFIBUS, PPI, TCP/IP
- Supporting all OPC-Client-compliant software, e.g. iFix, WinCC and InTouch
- Supporting the use of symbols from S7 projects
- Supporting the use of symbols from Inat OPC servers
- Safety due to continuous connection monitoring
- Web based diagnostics and mini visualisation with integrated web server
- Installed in less than a minute



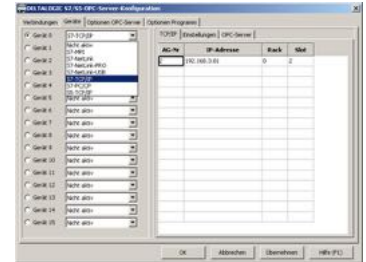
Did you know:

That the S7/S5-OPC-Server has an integrated web server? This makes S7 data visible via http pages in the network.

S7/S5-OPC-Server

Technical details

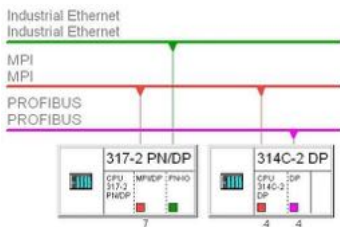
Supported operating systems	Windows XP, 7, 8.1, 10, 2008 R2, 2012 R2 (32 and 64 Bit), 2016, 2019
Supported PLCs	S5, S7-200, S7-1200, S7-300, S7-400, S7-1500, LOGO! OBA7 & OBA8, S7-300/400-compatible PLCs (e.g. Vipa, Saia, Berthel)
Supported OPC specifications	Data Access 1.0a, 2.05, 3.0 and OPC XML-DA
Supported OPC interfaces	All Mandatory Interfaces according to Data Access specification Dynamic namespace with STEP 7 semantics for OPC item names Static namespace by importing symbols from STEP 7 or text file
Supported OPC data types	VARIANT data types UI1, I1, UI2, I2, UI4, I4, R4, R8, BOOL as well as arrays including these data types, BSTR
Supported S7 data types	BOOL, BYTE, CHAR, WORD, INT, BCD, S5TIME, DATE, DWORD, DINT, REAL, TIME, TIME_OF_DAY, DATE_AND_TIME as well as fields with these data types, STRING
Supported S7 operand types	I, Q, M, C, T, DB, PE, PA
Forms of implementation	OutProc Server, Service
Number of PLCs	Min. 256, depending on the connection up to 4096



Did you know:

That the installation of the S7/S5-OPC-Server is surprisingly slim?

S7/S5-OPC-Server



Did you know:

That the S7/S5-OPC-Server can support up to 4096 PLCs simultaneously?

Supported communication channels (selection)

PLC interface	PC interface		
	TCP/CP	USB	Siemens CP
S7-300/400 via MPI	ACCON-NetLink-PRO compact	ACCON-NetLink-USB compact	+
S7-300/400 via PROFIBUS	ACCON-NetLink-PRO compact	ACCON-NetLink-USB compact	+
S7-300/400 via TCP/IP (PN/IE)	+	–	+
S7-200 via PPI	ACCON-NetLink-PRO compact	ACCON-NetLink-USB compact	+
S7-200 via TCP/IP	+	–	+
S5 via PG bushing (AS511)	ACCON-S5-LAN	ACCON-COM-Cable USB	–
S5 via TCP/IP¹⁾	+	–	–
S7-1200 via TCP/IP	+	–	–
S7-1500 via TCP/IP	+	–	–
LOGO! 0BA7/0BA8 via TCP/IP	+	–	–

+ Possible without adapter

– Not possible

¹⁾ Siemens CP 1430 TCP, VIPA CP143 TCP/IP, INAT S5-TCP/IP 100